

Test your knowledge

Sexually transmitted diseases are still with us but the diseases have changed. Syphilis still occurs but doesn't exert the hold on the public psyche that it once did. A busy GP is more likely to see genital warts than *Pneumocystis carinii*. Test your knowledge of sexually transmitted diseases.

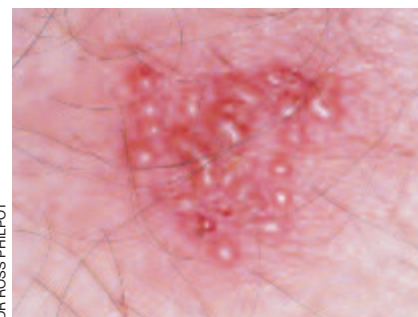
The multiple choice questions in this quiz may have more than one answer.

1. An 18-year-old woman presents three months after a Gold Coast holiday. She complains of perineal and perianal discomfort (Figure 1). What is the abnormality depicted?
 - a. pubic crab lice
 - b. syphilitic gumma
 - c. syphilitic serpinginous ulcers
 - d. genital warts
 - e. vesicles caused by genital herpes
2. Which infectious agent causes the abnormality in Figure 1?
 - a. human papilloma virus
 - b. hepatitis B virus
 - c. *Chlamydia trachomatis*



Figure 1.

- d. herpes simplex virus type 2 (HSV-2)
 - e. herpes simplex virus type 1 (HSV-1)
3. What other disease is associated with the infectious agent in Figure 1?
 - a. cirrhosis of the liver
 - b. hepatocellular carcinoma
 - c. carcinoma of the cervix
 - d. infertility in women
 - e. encephalitis
 4. A 22-year-old man presents with urethritis. Testing shows he is infected with *Chlamydia trachomatis*. He is accompanied on his second visit by his fiancée, who has no symptoms. Which of the following are true?
 - a. it is unlikely she has chlamydia because the infection usually causes marked urethral irritation in young women
 - b. chlamydial infection can be asymptomatic so she should be tested
 - c. the only available test for chlamydia is with an endocervical swab
 - d. urine tests for diagnosis of chlamydia are available and should be performed
 - e. she should be seen again in two weeks to see if she has developed any symptoms – if she has remained asymptomatic she is not infected
 5. Which of the following are effective for chlamydial infection?
 - a. azithromycin, 1 g stat
 - b. tetracycline, 100 mg twice daily for ten days
 - c. amoxicillin, 1 g stat
 - d. tinidazole, 1 g stat
 - e. AZT, 1 g stat
 6. A 36-year-old man shows you a crop of vesicles on his thigh (Figure 2). He tells you it is the fifth time 'these blisters' have appeared. What is most likely to be responsible for his infection?



DR ROSS PHILPOT

Figure 2.

- a. herpes simplex virus type 1
 - b. herpes simplex virus type 2
 - c. human papilloma virus
 - d. molluscum contagiosum virus
 - e. coxsackievirus A
7. Which of the following are effective for the infection in Figure 2?
 - a. lamivudine
 - b. interferon
 - c. ribavirin
 - d. valaciclovir
 - e. famciclovir
 8. Syphilis is still common in some STD clinics in Australia. Which of the following are reliably effective for primary syphilis?
 - a. tetracycline, 100 mg twice daily for 10 days
 - b. aciclovir, 1 g stat, then 200 mg five times daily for 10 days
 - c. benzathine penicillin, 1.8 g stat, followed by procaine penicillin, 1 g/day for 10 days, and oral probenecid, 500 mg for 10 days
 - d. ciprofloxacin, 500 mg stat, orally
 - e. ceftriaxone, 250 mg stat, IMI. **MT**

References

1. Garland SM. How to treat genital warts. Mod Med Aust 1999; 42(5): 109-116.
2. Philpot CR. A management update for common sexually transmissible infections. Mod Med Aust 1998; 41(3): 18-22.

Answers appear on the inside back cover.

Clinical quiz answers

(to questions on page 117)

1. d

Figure 1 shows genital warts in a young woman.

2. a

Genital warts are caused by the human papilloma virus.

3. c

Human papilloma virus is associated with carcinoma of the cervix, although the genotypes are not the same as those causing genital warts. A Pap smear should be performed in a woman who presents with genital warts.

4. b, d

The majority of people with chlamydia have no symptoms or only minor symptoms, so the patient's fiancée may be infected. In the past, endocervical swabs were required for diagnosis, but now urine testing is available using molecular biology techniques.

5. a

Azithromycin, 1 g stat, is a very effective therapy for chlamydial infection, and the single dose helps compliance. The 10-day tetracycline treatment might also be effective, but the dose would need to be much higher and it is not unusual for people to fail to finish the course.

6. b

The vesicles in Figure 2 and the site and number of episodes are typical of herpes simplex virus type 2 (HSV-2).

7. d, e

Aciclovir, valaciclovir and famciclovir are antiviral agents that are effective against herpes simplex virus infections. Valaciclovir and famciclovir have a longer half-life than aciclovir – therefore, less frequent doses are required, which helps with compliance. Lamivudine, interferon and ribavirin are antiviral agents used in the treatment of hepatitis B and C, and lamivudine is also useful for HIV infection.

8. c

Penicillin is still the treatment of choice for syphilis. Ciprofloxacin and ceftriaxone can be useful in gonorrhoea, and tetracyclines (in much higher dose) are used in the treatment of chlamydia.